

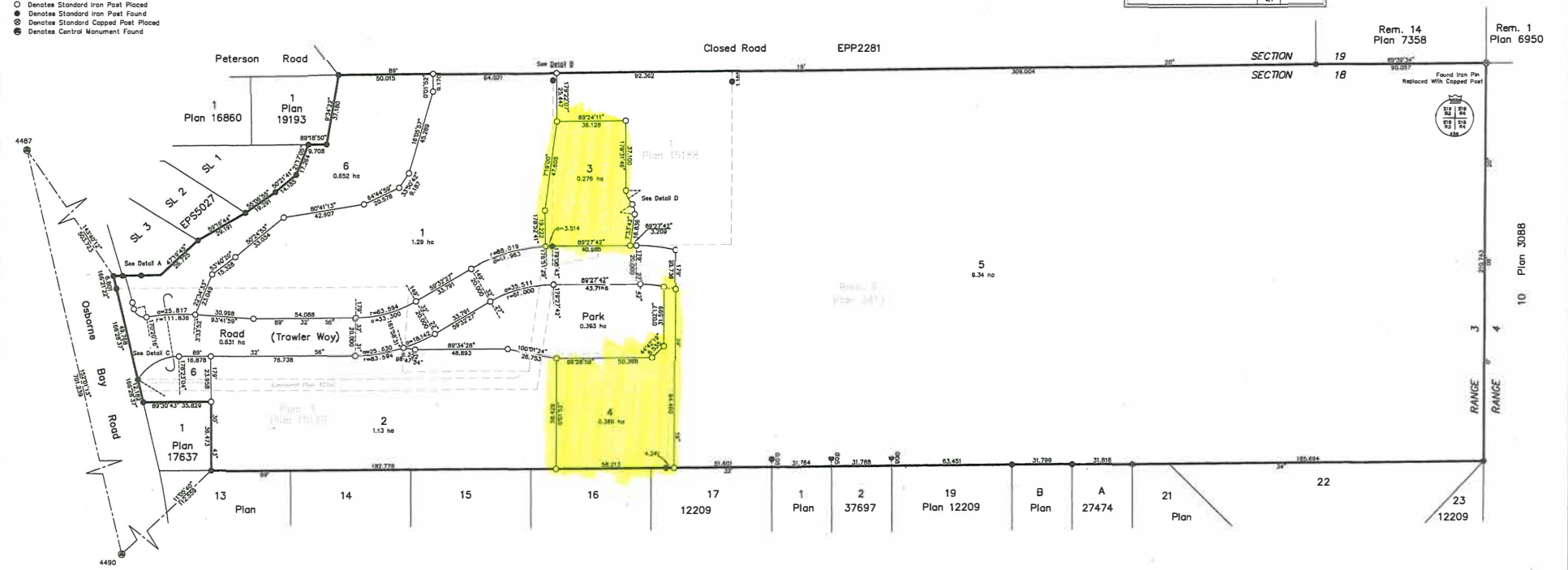
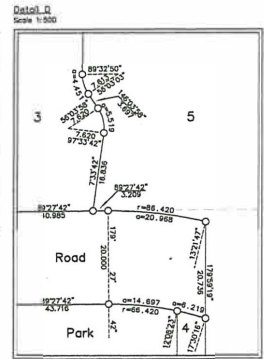
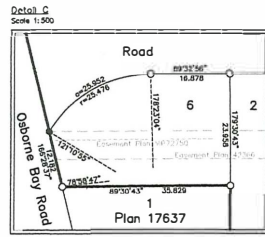
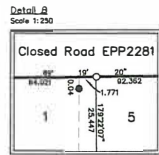
SUBDIVISION PLAN OF:
 LOT 1, PLAN 15130, EXCEPT PART IN PLAN 17637, AND
 LOT 1, PLAN 15188, AND LOT 3, PLAN 2413, EXCEPT
 PARTS IN PLANS 10955, 15130, 15188, 16860, 19193,
 EPP75466, AND EPP84588, ALL IN SECTION 18, RANGE 3,
 COMIAKEN DISTRICT.

Pursuant to Section 87 of the Land Title Act.
 BCOS 928 082



The intended plot size of this plan is 550mm in height by 854mm in width (D Size) when plotted at a scale of 1:1000.
 Integrated Survey Area No. 10, Corporation of the District of North Cowichan, NAD83 (CRS) 3.0.0.BC.1.NV.
 Grid bearings are derived from observations between geodetic control monuments 4487 & 4490 and are referred to the central meridian of UTM Zone 10 North.
 The UTM coordinates and estimated absolute accuracy are derived from the MASCOT published coordinates and standard deviations for geodetic control monuments 4487 & 4490.
 This plan shows horizontal ground-level distances unless otherwise specified. To compute grid distances, multiply ground-level distances by the average combined factor of 0.9996192 which has been derived from geodetic control monuments 4487 & 4490.

- Legend
- Denotes Standard Iron Post Placed
 - Denotes Standard Iron Post Found
 - ⊙ Denotes Standard Copied Post Placed
 - ⊙ Denotes Central Monument Found



Turner & Associates
 Land Surveying
 435 Terminal Avenue North
 Nanaimo, B.C.
 V9S 4A8
 250-753-9778
 www.turnersurvey.co
 File: 17-103

DDM #	Tablet Marking	UTM Northing	UTM Easting	Estimated Horizontal Positional Accuracy	Point Scale Factor
716223	4487	5412000.39	452845.21	0.03 metres	0.9998223
837052	4490	5411381.35	452974.68	0.05 metres	0.9998161

This plan lies within the jurisdiction of the
 Approving Officer for The Municipality of North Cowichan.
 This plan lies within the
 Cowichan Valley Regional District.

The field survey represented by
 this plan was completed on
 the 27th day of August, 2020.
 Matthew D. Schunruh, BCLS 958