

TOPOGRAPHIC SURVEY FOR
LOT A, SECTION 3, RANGE 6,
COMIAKEN DISTRICT, PLAN 51112.

SCALE 1 : 500



LEGEND

All distances and elevations are in metres.
Elevations are derived from RB450 with an assumed Elevation of 34.46 m.
Contour Interval = 1 m.

- denotes standard iron post found.
 ○— denotes guy wire
 ◡ denotes utility pole
 △ denotes traverse hub placed.
 951 denotes fir tree with average dia. 40 cm

Note: Lot A lies within the Corporation of the District of North Cowichan and is zoned A2.

Bylaw setback requirements are as follows:

Principal Buildings	Accessory Buildings
<p>1. Main Building</p> <p>2. Warehouse</p> <p>3. Office Building</p> <p>4. Garage</p> <p>5. Storage Shed</p> <p>6. Workshop</p> <p>7. Loading Dock</p> <p>8. Reception Area</p> <p>9. Conference Room</p> <p>10. Break Room</p> <p>11. Restroom</p> <p>12. Janitor's Office</p> <p>13. Mail Room</p> <p>14. Security Office</p> <p>15. Training Room</p> <p>16. Storage Room</p> <p>17. Inventory Room</p> <p>18. Shipping Room</p> <p>19. Receiving Room</p> <p>20. Quality Control Room</p> <p>21. Customer Service Center</p> <p>22. Sales Office</p> <p>23. Marketing Office</p> <p>24. Finance Office</p> <p>25. Human Resources Office</p> <p>26. IT Office</p> <p>27. Legal Office</p> <p>28. Compliance Office</p> <p>29. Environmental Office</p> <p>30. Safety Office</p> <p>31. Health Office</p> <p>32. Nutrition Office</p> <p>33. Fitness Office</p> <p>34. Wellness Office</p> <p>35. Mental Health Office</p> <p>36. Physical Therapy Office</p> <p>37. Chiropractic Office</p> <p>38. Massage Therapy Office</p> <p>39. Acupuncture Office</p> <p>40. Yoga Studio</p> <p>41. Pilates Studio</p> <p>42. Tai Chi Studio</p> <p>43. Martial Arts Studio</p> <p>44. Boxing Gym</p> <p>45. Judo Gym</p> <p>46. Karate Gym</p> <p>47. Taekwondo Gym</p> <p>48. Wrestling Gym</p> <p>49. Fencing Gym</p> <p>50. Archery Gym</p> <p>51. Shooting Gym</p> <p>52. Golf Gym</p> <p>53. Tennis Gym</p> <p>54. Baseball Gym</p> <p>55. Softball Gym</p> <p>56. Hockey Gym</p> <p>57. Figure Skating Gym</p> <p>58. Ice Hockey Gym</p> <p>59. Curling Gym</p> <p>60. Biathlon Gym</p> <p>61. Luge Gym</p> <p>62. Skeleton Gym</p> <p>63. Bobsled Gym</p> <p>64. Winter Biathlon Gym</p> <p>65. Winter Luge Gym</p> <p>66. Winter Skeleton Gym</p> <p>67. Winter Bobsled Gym</p> <p>68. Winter Biathlon Gym</p> <p>69. Winter Luge Gym</p> <p>70. Winter Skeleton Gym</p> <p>71. Winter Bobsled Gym</p> <p>72. Winter Biathlon Gym</p> <p>73. Winter Luge Gym</p> <p>74. Winter Skeleton Gym</p> <p>75. Winter Bobsled Gym</p> <p>76. Winter Biathlon Gym</p> <p>77. Winter Luge Gym</p> <p>78. Winter Skeleton Gym</p> <p>79. Winter Bobsled Gym</p> <p>80. Winter Biathlon Gym</p> <p>81. Winter Luge Gym</p> <p>82. Winter Skeleton Gym</p> <p>83. Winter Bobsled Gym</p> <p>84. Winter Biathlon Gym</p> <p>85. Winter Luge Gym</p> <p>86. Winter Skeleton Gym</p> <p>87. Winter Bobsled Gym</p> <p>88. Winter Biathlon Gym</p> <p>89. Winter Luge Gym</p> <p>90. Winter Skeleton Gym</p> <p>91. Winter Bobsled Gym</p> <p>92. Winter Biathlon Gym</p> <p>93. Winter Luge Gym</p> <p>94. Winter Skeleton Gym</p> <p>95. Winter Bobsled Gym</p> <p>96. Winter Biathlon Gym</p> <p>97. Winter Luge Gym</p> <p>98. Winter Skeleton Gym</p> <p>99. Winter Bobsled Gym</p> <p>100. Winter Biathlon Gym</p>	<p>1. Main Building</p> <p>2. Warehouse</p> <p>3. Office Building</p> <p>4. Garage</p> <p>5. Storage Shed</p> <p>6. Workshop</p> <p>7. Loading Dock</p> <p>8. Reception Area</p> <p>9. Conference Room</p> <p>10. Break Room</p> <p>11. Restroom</p> <p>12. Janitor's Office</p> <p>13. Mail Room</p> <p>14. Security Office</p> <p>15. Training Room</p> <p>16. Storage Room</p> <p>17. Inventory Room</p> <p>18. Shipping Room</p> <p>19. Receiving Room</p> <p>20. Quality Control Room</p> <p>21. Customer Service Center</p> <p>22. Sales Office</p> <p>23. Marketing Office</p> <p>24. Finance Office</p> <p>25. Human Resources Office</p> <p>26. IT Office</p> <p>27. Legal Office</p> <p>28. Compliance Office</p> <p>29. Environmental Office</p> <p>30. Safety Office</p> <p>31. Health Office</p> <p>32. Nutrition Office</p> <p>33. Fitness Office</p> <p>34. Wellness Office</p> <p>35. Mental Health Office</p> <p>36. Physical Therapy Office</p> <p>37. Chiropractic Office</p> <p>38. Massage Therapy Office</p> <p>39. Acupuncture Office</p> <p>40. Yoga Studio</p> <p>41. Pilates Studio</p> <p>42. Tai Chi Studio</p> <p>43. Martial Arts Studio</p> <p>44. Boxing Gym</p> <p>45. Judo Gym</p> <p>46. Karate Gym</p> <p>47. Taekwondo Gym</p> <p>48. Wrestling Gym</p> <p>49. Fencing Gym</p> <p>50. Archery Gym</p> <p>51. Shooting Gym</p> <p>52. Golf Gym</p> <p>53. Tennis Gym</p> <p>54. Baseball Gym</p> <p>55. Softball Gym</p> <p>56. Hockey Gym</p> <p>57. Figure Skating Gym</p> <p>58. Ice Hockey Gym</p> <p>59. Curling Gym</p> <p>60. Biathlon Gym</p> <p>61. Luge Gym</p> <p>62. Skeleton Gym</p> <p>63. Bobsled Gym</p> <p>64. Winter Biathlon Gym</p> <p>65. Winter Luge Gym</p> <p>66. Winter Skeleton Gym</p> <p>67. Winter Bobsled Gym</p> <p>68. Winter Biathlon Gym</p> <p>69. Winter Luge Gym</p> <p>70. Winter Skeleton Gym</p> <p>71. Winter Bobsled Gym</p> <p>72. Winter Biathlon Gym</p> <p>73. Winter Luge Gym</p> <p>74. Winter Skeleton Gym</p> <p>75. Winter Bobsled Gym</p> <p>76. Winter Biathlon Gym</p> <p>77. Winter Luge Gym</p> <p>78. Winter Skeleton Gym</p> <p>79. Winter Bobsled Gym</p> <p>80. Winter Biathlon Gym</p> <p>81. Winter Luge Gym</p> <p>82. Winter Skeleton Gym</p> <p>83. Winter Bobsled Gym</p> <p>84. Winter Biathlon Gym</p> <p>85. Winter Luge Gym</p> <p>86. Winter Skeleton Gym</p> <p>87. Winter Bobsled Gym</p> <p>88. Winter Biathlon Gym</p> <p>89. Winter Luge Gym</p> <p>90. Winter Skeleton Gym</p> <p>91. Winter Bobsled Gym</p> <p>92. Winter Biathlon Gym</p> <p>93. Winter Luge Gym</p> <p>94. Winter Skeleton Gym</p> <p>95. Winter Bobsled Gym</p> <p>96. Winter Biathlon Gym</p> <p>97. Winter Luge Gym</p> <p>98. Winter Skeleton Gym</p> <p>99. Winter Bobsled Gym</p> <p>100. Winter Biathlon Gym</p>

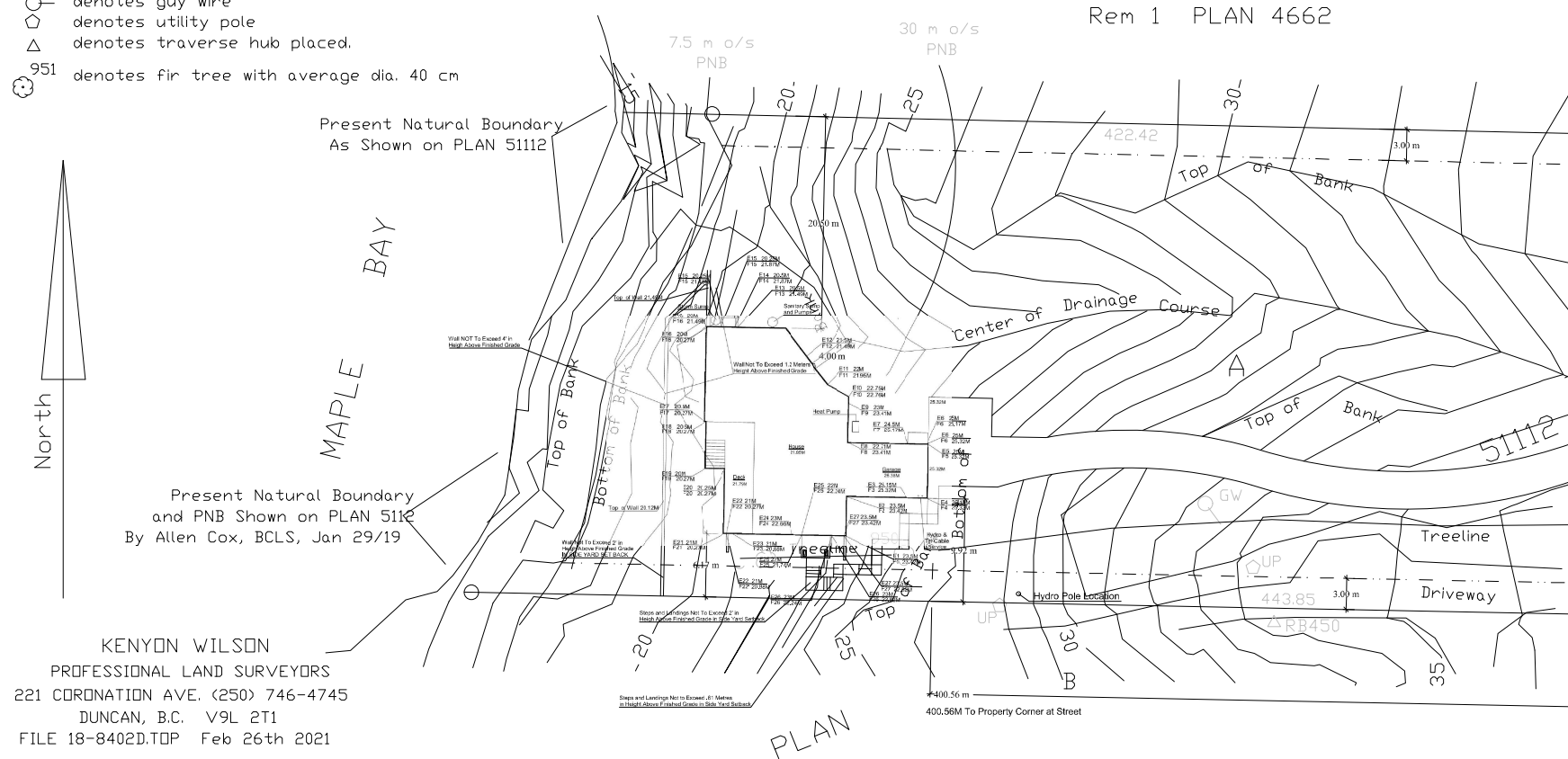
Front 6.0 m Front 8.0 m

Side 3.0 m Side 3.0 m

Rear 8.0 m Rear 8.0 m

Watercourse (Sea) Natural Boundary 7.5 m

This property is subject to Statutory Right of Way
BC Hydro and Telus Document CA5789685.

[illegible]

Project:
Stoney Hill Road
Maple Bay

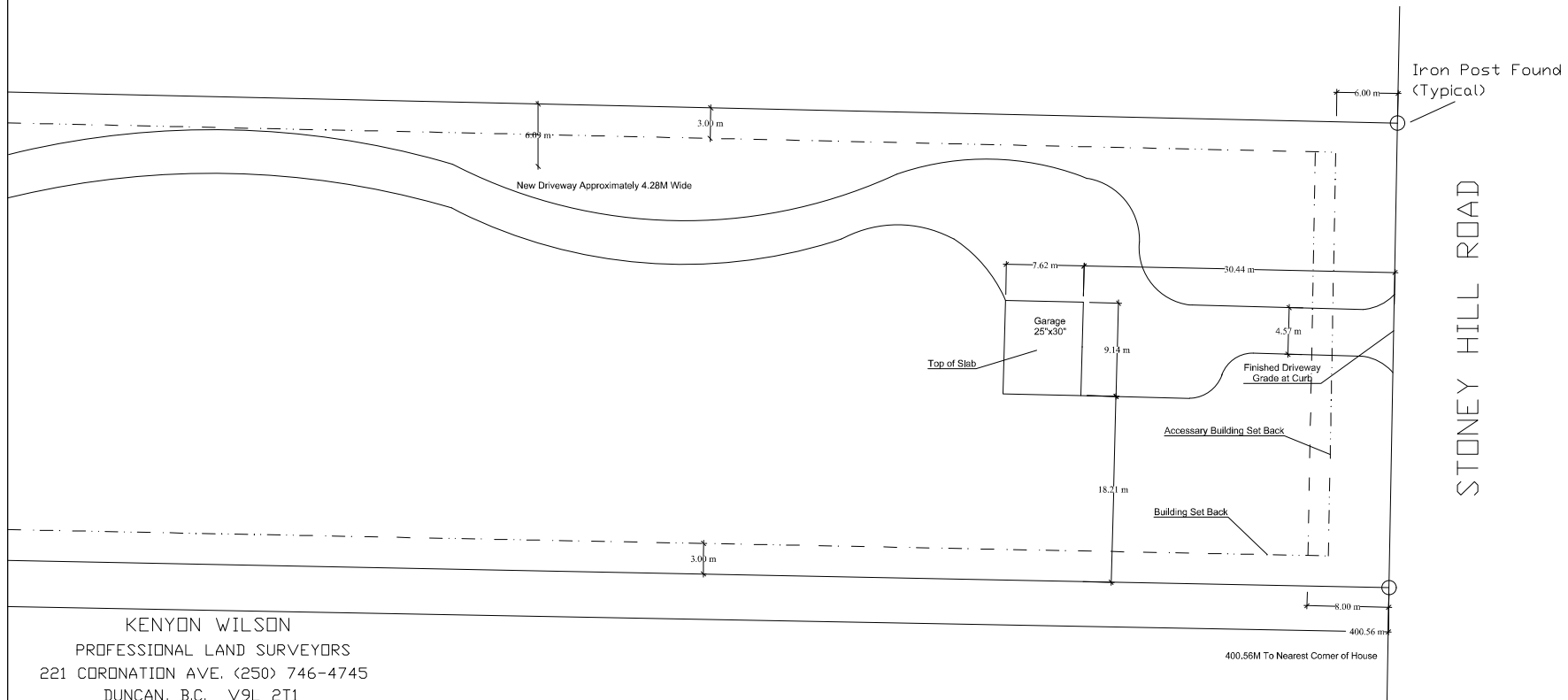
Permit
Copy

Job Title
Scale : 5mm = 1M
Date: June 20, 2022
Drawn By: D.W.
Checked By:

Site Plan

A1a

TOPOGRAPHIC SURVEY FOR
LOT A, SECTION 3, RANGE 6,
COMIAKEN DISTRICT, PLAN 51112.

[illegible]

Project:
Stoney Hill Road
Maple Bay

Permit
Copy

Job Title
Scale : 5mm = 1M
Date: June 20, 2022
Drawn By: D.W.
Checked By:

Site Plan

A1b